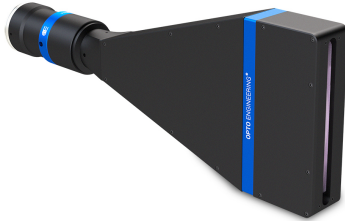


TC4K120-J | DATASHEET

Telecentric lens for 4k line scan cameras, magnification 0.240x, M42x1 FD 12 mount



SPECIFICATIONS

Optical specifications

| | | |
|---|------|---------------|
| Magnification | | 0.240 |
| Image width | (mm) | 28.7 |
| Max sensor size | | 4k |
| Working distance ¹ | (mm) | 174.0 |
| wf/N^2 | | 16 |
| Telecentricity typical (max) ³ | (°) | < 0.06 (0.10) |
| Distortion typical (max) ⁴ | (%) | < 0.05 (0.08) |
| Field depth ⁵ | (mm) | 29.2 |
| Resolution (max) ⁶ | (μm) | 42 |

Mechanical specifications

| | | |
|-------------------------------|------|-------------|
| Mount ⁷ | | M42x1 FD 12 |
| Phase adjustment ⁸ | | Yes |
| Length ⁹ | (mm) | 371.8 |
| Width | (mm) | 144.0 |
| Height | (mm) | 52.0 |
| Mass | (g) | 1912 |

KEY ADVANTAGES

Compact design

"Flat" shape for easy integration

Easy rotational phase and focus adjustment

Robust and precise tuning of FOV phase angle and best focus position

Compatible LTCL4K telecentric illuminators

with matching flat design.

Dedicated CMMR4K mirrors

90° deflection of the light path for usage in tight spaces and easy integration

Detailed test report with measured optical parameters.

TC4K series telecentric lenses have been designed for measurement applications using line scan cameras with a detector size up to 28.7 mm (e.g. 4096 pixels with pixel size 7 μm)

FIELD OF VIEW

| Sensors | (mm) |
|----------------------------|--------|
| Line - 2k x 5μm (10.24 mm) | 42.67 |
| Line - 2k x 7μm (14.34 mm) | 59.75 |
| Line - 4k x 5μm (20.48 mm) | 85.33 |
| Line - 4k x 7μm (28.67 mm) | 119.46 |

¹ Working distance: distance between the front end of the mechanics and the object. Set this distance within $\pm 3\%$ of the nominal value for maximum resolution and minimum distortion.

² working f/N : the real f/N of a lens in operating conditions.

³ Maximum angle between chief rays and optical axis on the object side. Typical (average production) values and maximum (guaranteed) values are listed.

⁴ Percent deviation of the real image compared to an ideal, undistorted image. Typical (average production) values and maximum (guaranteed) values are listed.

⁵ At the borders of the field depth the image can be still used for measurement but, to get a very sharp image, only half of the nominal field depth should be considered. Pixel size used for calculation is 7 μm.

⁶ Object side, calculated with the Rayleigh criterion for $\lambda = 520$ nm

⁷ FD stands for Flange distance (in mm), defined as the distance from the mounting flange to the camera detector plane.

⁸ Indicates the availability of an integrated camera phase adjustment feature.

⁹ Measured from the front end of the mechanics to the camera flange.

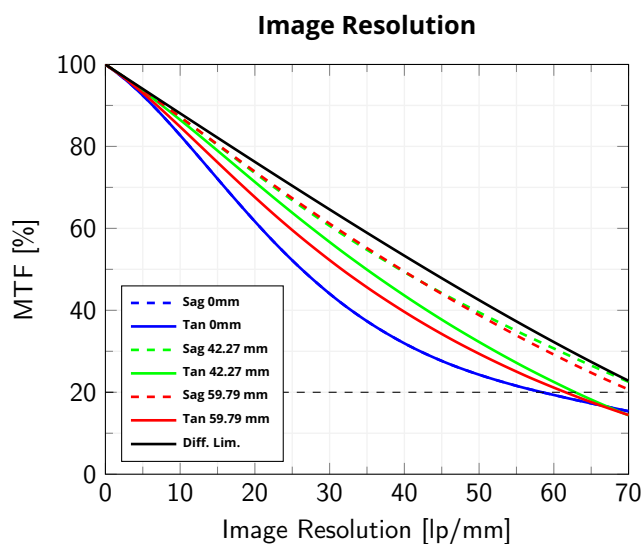
COMPATIBLE PRODUCTS

Full list of compatible products available [here](#).

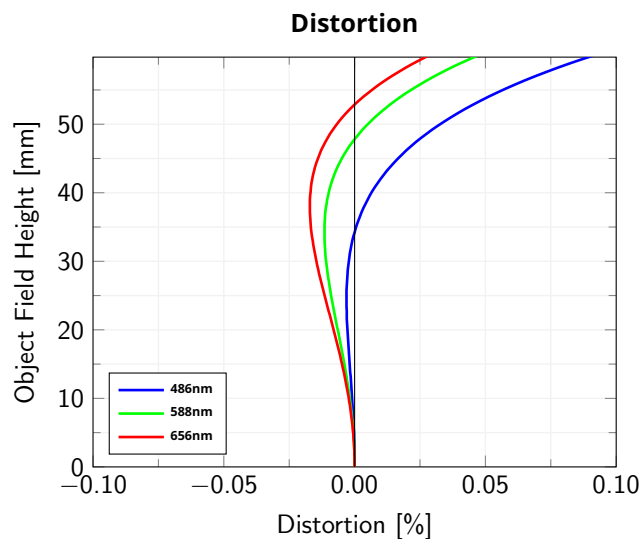


A wide selection of innovative machine vision components.

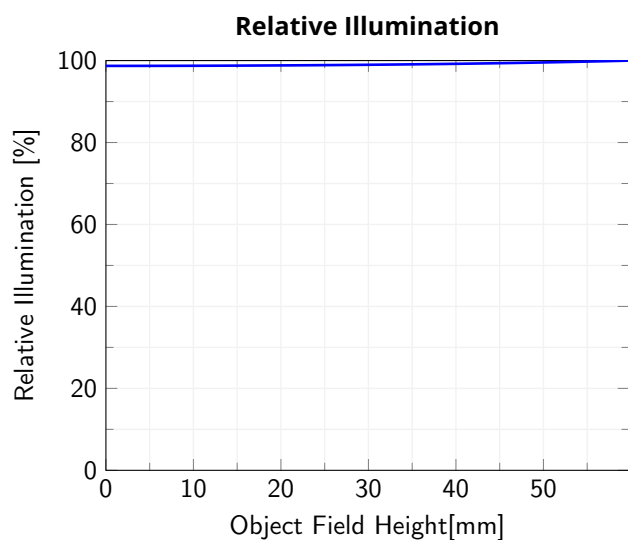
All product specifications and data are subject to change without notice to improve reliability, functionality, design or other. Photos and pictures are for illustration purposes only. Data are reported by design, actual lens performance may vary due to manufacturing tolerances.



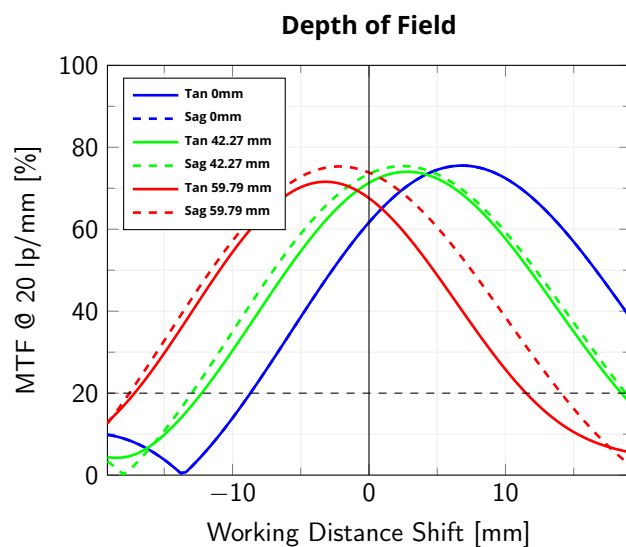
Modulation Transfer Function (MTF) vs. Image Resolution, wavelength range 486 nm - 656 nm



Object Field Height vs. Distortion, from the optical axis to the corner of the field of view



Relative illumination vs. Object Field Height, from the optical axis to the corner of the field of view



Modulation Transfer Function (MTF) @ 20 lp/mm vs. Working Distance Shift from the best focus Working Distance, wavelength range 486 nm - 656 nm